

Note: We will be recording all Bootcamp Sessions. Anyone not wishing to be recorded should mute their video or disconnect.



# FINDING DX, LOGGING CONTACTS, AND CHASING AWARDS

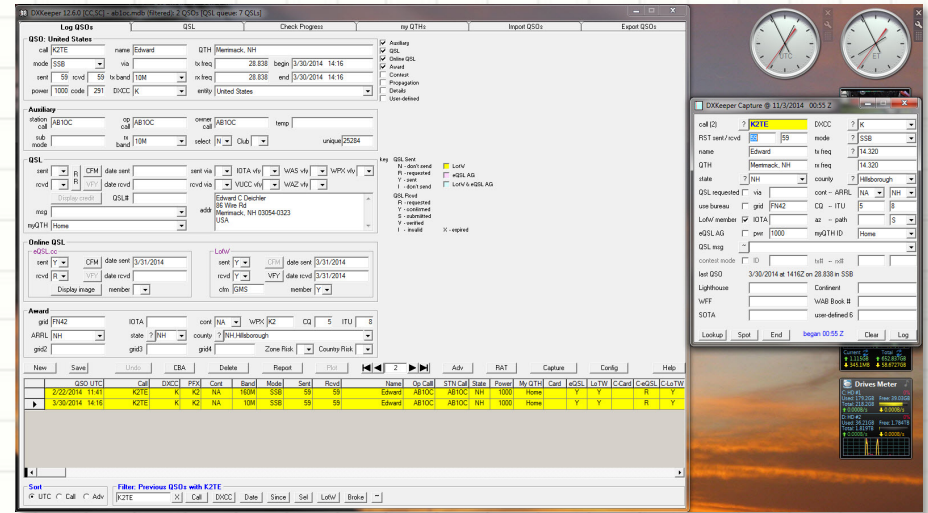
Nashua Area Radio Society

Fall 2021

©Nashua Area Radio Society and AB1OC, All Rights including recording in any form are reserved.

# DX'ing, Loggers and Awards

We'll Cover:



- Working DX Stations – Why and How
- Why Use A Computer Based Logger?
- Popular Loggers
- How to Use a Logger – Using DXLab Suite
  - How to Make and Log a QSO
  - What Else Can a Logger Do?
- Operating Awards



# Working DX Stations

## Communicating with the World

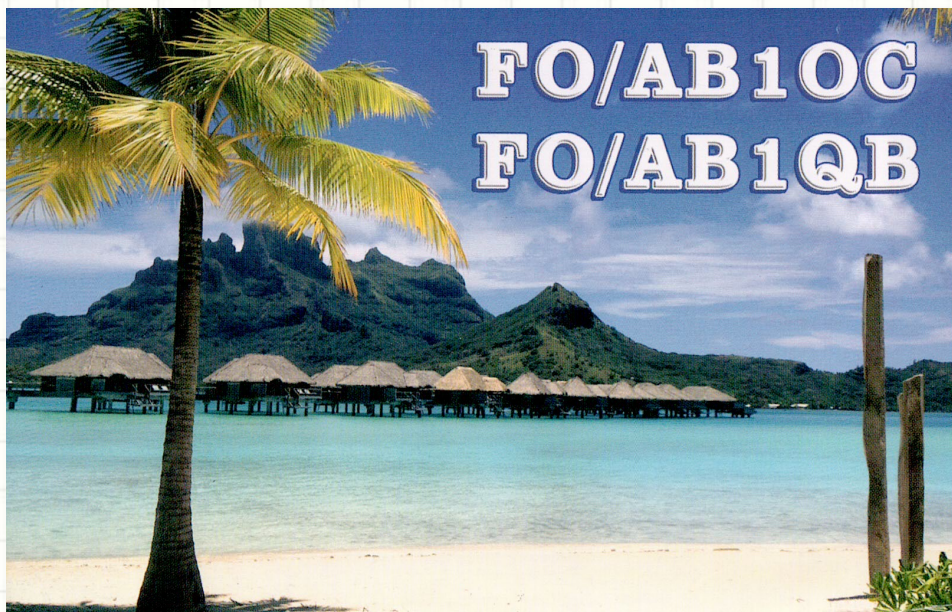


- There are 340 DXCC entities, some are located in remote, uninhabited places
- Hams can earn an operating award for working (talking to) and confirming 100
- All Hams want to “work them all” at least once
- Many are on only once every 10 to 15 years
- What do you think is the most wanted DXCC in the world right now?




# Why Do I Want to DX?

- It is a challenge
- Operating Awards
- Make friends in other countries
- Learn about geography
- Collect QSL Cards or Postage Stamps





# Why Do I Want to DX?

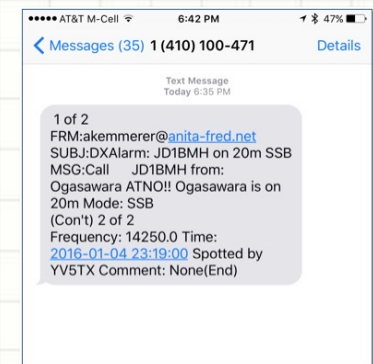
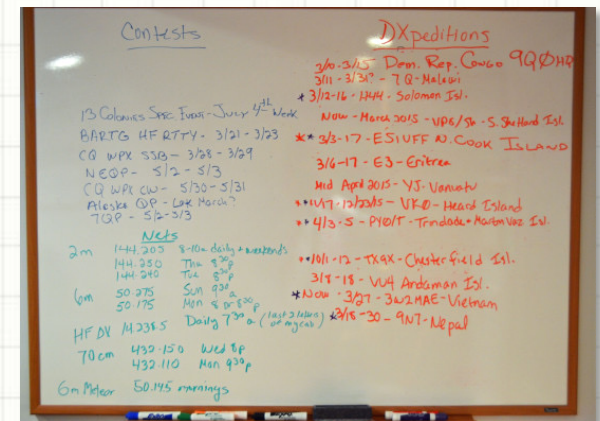
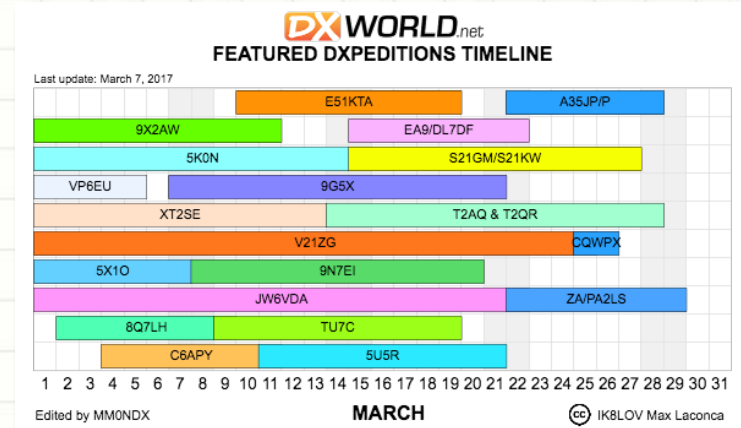


DXing  
and  
DXpeditions

[DX'ing Video](#)

# How To Find DX

- Tune the HF bands and Call CQ
- Look for DXpeditions to work the rare ones
  - [DX World](#), [The Daily DX](#)
- [DXSummit](#) – Spotting Cluster
- [ClubLog](#) Personal Spots Cluster
- Logger Apps: Spot Collector in DXLab
- [DX Alarm Clock](#)
- Worldwide Contests
  - [CQ WW](#) , [CQ WPX](#), [ARRL DX](#)
  - Contest Calendars: [ARRL](#) and [WA7BNM](#)





# Why Use A Computer Logger?

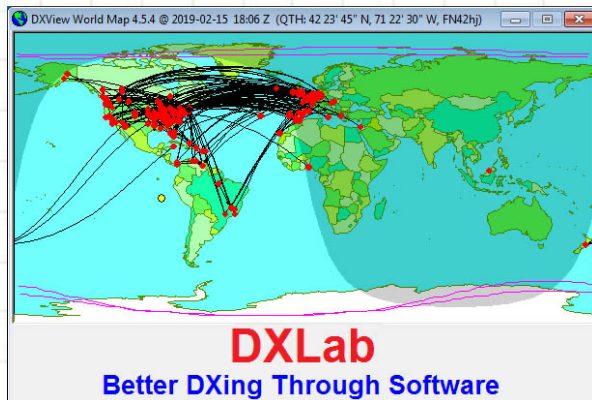


- **Simpler, Accurate Logging**
  - Interfaces to your transceiver - Log frequency, mode, and date/time automatically
- **Find and Work More DX**
  - Pull in data from spotting networks
  - Provides propagation information
- **Better QSOs**
  - Automatically pull up QRZ pages, learn about the person you are communicating with
- **Automate Your Station so you can Focus On The Contact**
- **Work Towards and Apply for Operating Awards**
- **Make QSL'ing Simpler and Faster**
- **More Flexible CW and SSB Keying**
- **Operate Using (Advanced) Digital Modes**
- .....

# Popular Loggers

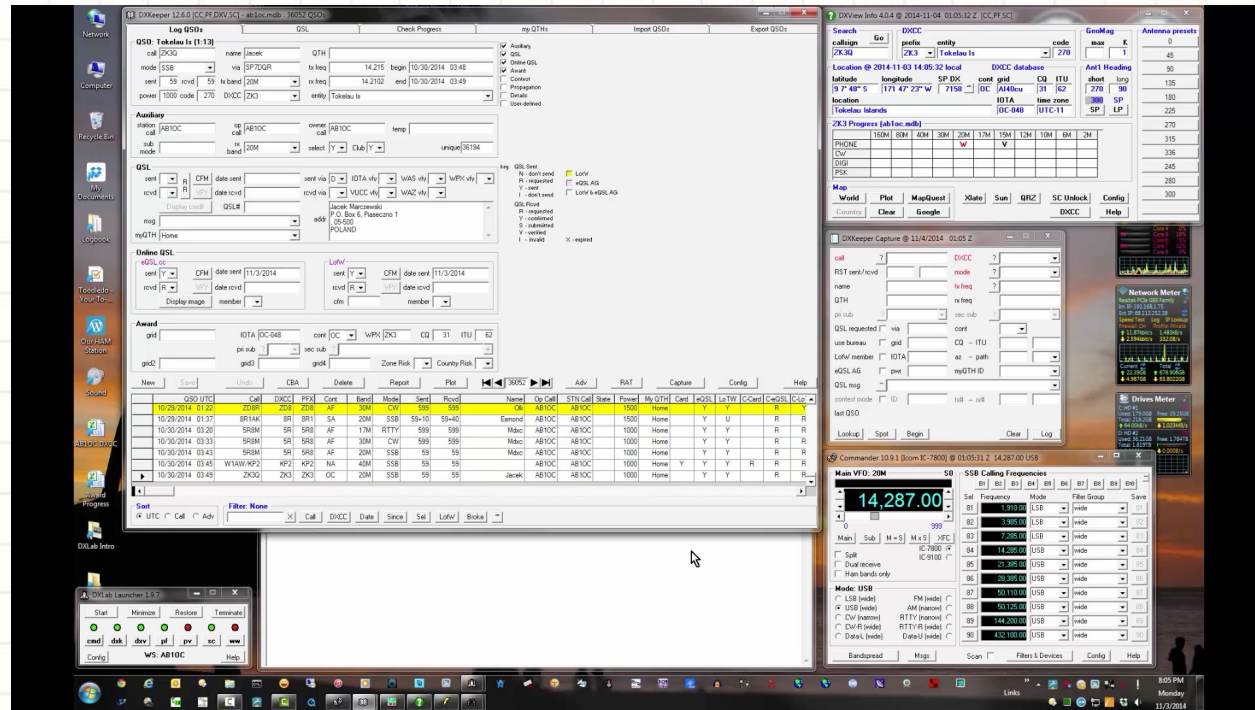


- [DXLab Suite](#) – Feature Rich, Best QSL'ing and Award Features, Free, a Little Less User Friendly than others
- [Ham Radio Deluxe](#) (HRD) \$ – Popular logger, Not Free, More User-Friendly Interface, Fewer Features - especially for award chasing and QSL'ing
- [N1MM+](#) – Contest Logger, great for many fast QSOs, not as feature rich for DX'ing as DXLab, HRD
- We will focus on DXLab Suite for this presentation





# Making and Logging a Contact with DXLab

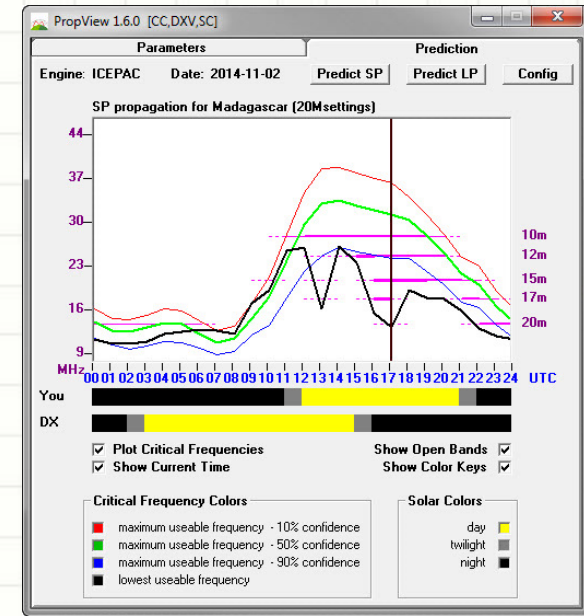


- Call CQ or tune the band to find a contact
- Capture the Callsign of the station you are working
  - Enter/confirm contact details & Validate Callsign in real-time ([QRZ.com](http://QRZ.com))
- Turn your antennas as necessary
- Lookup your contact on QRZ.com
  - Learn something about the person that you are talking with to spark a conversation

[Link to Video](#)

# Finding DX and Propagation Predictions

- Help to Find and Work DX
  - Spot Collector module pulls spotting data from multiple DX Clusters
  - Indicates which DX you need for Major Awards
  - One-click on a spot will tune to the DX's frequency and populate their data
- Make Propagation Predictions
  - PropView shows you propagation predictions for a DX station that you are trying to work



SpotCollector 7.0.2 @ 2014-10-29 22:28 Z [CC,DXK,PF,DXV,PV,WW] 213 entries (log: ab1oc.mdb)

WWV 08:18 1205 Z

SFI 115

History

Q: 10

A 7

0 K

Outgoing spot

Call

14,240.0 Freq

Cluster

Notes

X

Local

Spot source status

Report

Stats

Prop

Config

Help

	Callsign	Pfx	Band	Freq	Mode	DXCCCountry	Tim	Origin	Spotter	Notes	OSX	Count	Band	Mo	U	Co	Head	Distan	C	ITU	IOTA	Needed
	W3QT	K	40M	7.039.0	CW	United States	2228	NA-M	K5TDA-#	CW 5 dB 16 WPM CO			V	V	V	NA	239	305	5	8		
	VK9XSP	VK9	12M	24.900.0	CW	Christmas Is	2228	NA-W	N2NS	up 1	24.901.0		V	U	F	OC	6	10203	29	54	OC-002	D
	W20R	K	17M	18.159.0	SSB	United States	2228	NA-E	W20R	ARRL Cent 17m SSB CO			V	V	V	NA	214	1038	5	8		
	WD4LZC	K	40M	7.026.0	CW	United States	2228	NA-M	AC0C-#	CW 33 dB 24 WPM CO			V	V	V	NA	251	799	4	8		
	WB8FMA	K	40M	7.035.8	CW	United States	2228	NA-M	KA9SWE-#	CW 16 dB 20 WPM CO			V	V	V	NA	252	503	5	8		
	MW0JZE	GW	20M	14.083.6	RTTY	Wales	2228	NA-E	N20T-#	RTTY -3 dB 45 BPS CO			V	V	V	EU	53	3144	14	27		
	OK1EW	OL	40M	7.004.1	CW	Czech Republic	2228	EU	F5MUX-#	CW 33 dB 24 WPM CO			V	V	V	EU	50	3911	15	28		
	CA7CAQ	CE	10M	28.082.1	RTTY	Chile	2228	NA-E	W30A-#	RTTY 9 dB 45 BPS CO			V	V	V	SA	181	6164	12	16	SA-018	
	F6EAZ	F	30M	10.120.0	CW	France	2228	NA-E	AA4VV-#	CW 11 dB 23 WPM CO			V	V	V	EU	56	3599	14	27		
	WD4NGB	K	20M	14.088.0	RTTY	United States	2228	NA-E	K3IT-#	RTTY 30 dB 45 BPS CO			V	V	V	NA	248	937	4	8		
	CT12Q	CT	40M	7.009.6	CW	Portugal	2228	NA-E	W27H-#	CW 9 dB 25 WPM CO			V	V	V	EU	72	3194	14	37		
	WD8FMA	K	40M	7.035.8	CW	United States	2228	NA-M	K08M-#	CW 21 dB 20 WPM CO			V	V	V	NA	269	1332				
	KD4ESO	K	20M	14.010.8	CW	United States	2228	NA-E	K3IT-#	CW 29 dB 14 WPM CO			V	V	V	NA	238	1004	4	8		
	W5JAY	K	15M	21.085.1	RTTY	United States	2228	NA-E	K3IT-#	RTTY 32 dB 45 BPS CO			V	V	V	NA	255	1316	4	7		
	N3CAU	K	20M	14.090.0	RTTY	United States	2228	NA-E	K3IT-#	RTTY 6 dB 45 BPS CO			V	V	V	NA	230	379	5	8		
	XE3DX	XE	10M	28.086.2	RTTY	Mexico	2228	NA-E	K3IT-#	RTTY 3 dB 45 BPS CO			V	V	V	NA	233	2257	6	10		
	JA1VRY	JA	10M	28.082.2	RTTY	Japan	2228	NA-E	N20T-#	RTTY -2 dB 45 BPS CO			V	V	V	AS	334	6591	25	45		
	W4GKR	K	20M	14.081.6	RTTY	United States	2227	NA-E	W27H-#	RTTY 33 dB 45 BPS CO			V	V	V	NA	245	1538	4	7		
	7N1PRD/0	JA	10M	28.021.1	CW	Japan	2227	NA-W	N7TR-#	CW 16 dB 23 WPM CO			V	V	V	AS	334	6591	25	45		
	N4DCI	K	20M	14.011.0	CW	United States	2227	NA-M	K08M-#	CW 21 dB 20 WPM CO			V	V	V	NA	269	1332				

Sort

First

Call

Last

Freq

Rev

Az

Filter: Band and Origin and (Age < 60 minutes)

X

AH

Need

Call

DXCC

Freq

Tag

Band

Mode

Cont

Origin

State

APRL

IOTA

N-IOTA

SQL 5

SQL 6

SQL 7

SQL 8

Color codes

verified

unneeded

unconfirmed

unused B or M

unused counter

special tag

LotV

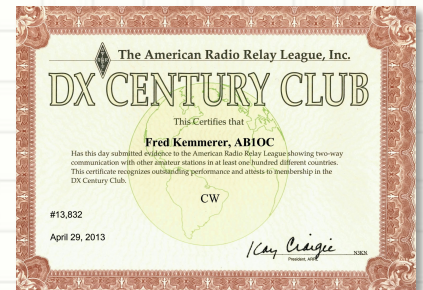
eQSL AG

LotV & eQSL AG



# Why QSL?

- Collect QSL Cards
  - Keep in Albums
  - Frame Favorite Cards
  - Make a Screen Saver with your Favorite Cards
- Earn Operating Awards – Certificates and Plaques
  - ARRL DXCC, WAS, VUCC
  - CQ WAZ, WPX
- Other Awards:
  - JARL (Japan), RSGB (UK), SARL (South Africa), WIA (Australia), WAE (Worked All Europe) and others



# QSL'ing

There Are Many Options...

- **LoTW or eQSL** – online services
  - Costs \$\$ to use confirmed QSOs for award credit
- **Direct QSL** – send your card with SAE and return postage (green stamps)
  - Postal theft can be a problem
  - Can get expensive
- **ClubLog** – check logs and order QSLs via Direct or Buro
  - Charge \$\$ for Direct QSL, “Buro” is usually free
  - There are other online QSL services as well (ex. M00XO)
- **QSL “Buro”** – least expensive but slow
  - Good for confirming less important contacts
- Always begin by checking QSL “route” & options – [www.qrz.com](http://www.qrz.com)

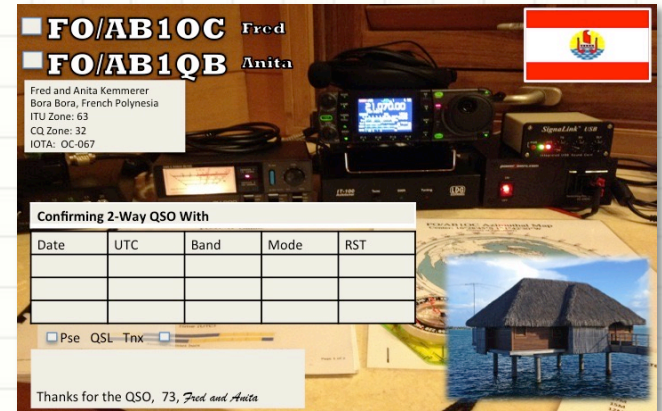




# QSL'ing

Start with a QSL Card

- **UX5UO** – Gennady in Ukraine
  - Used by many DXpeditions
  - <https://www.ux5uogsl.com/>
  - He will help you to create a good design
- **KB3IFH** – Randy Dorman
  - Domestic –in Maryland
  - <http://kb3ifh.homestead.com/>
  - QSL Cards for 13 Colonies Special Event
- Information to include
  - Name, Callsign, Address, Email
  - Grid Square, CQ & ITU Zone
  - IOTA if applicable
  - QSO info: Date, UTC, Band, Mode, RST
  - Can make back blank and use logger to print info



# QSL'ing

## Direct Mail

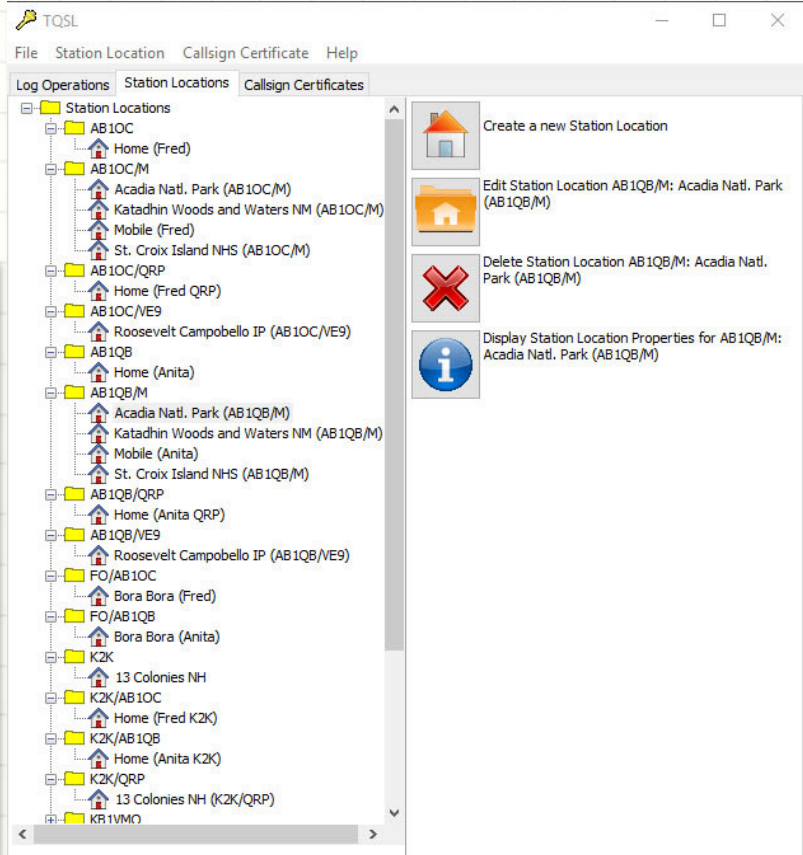
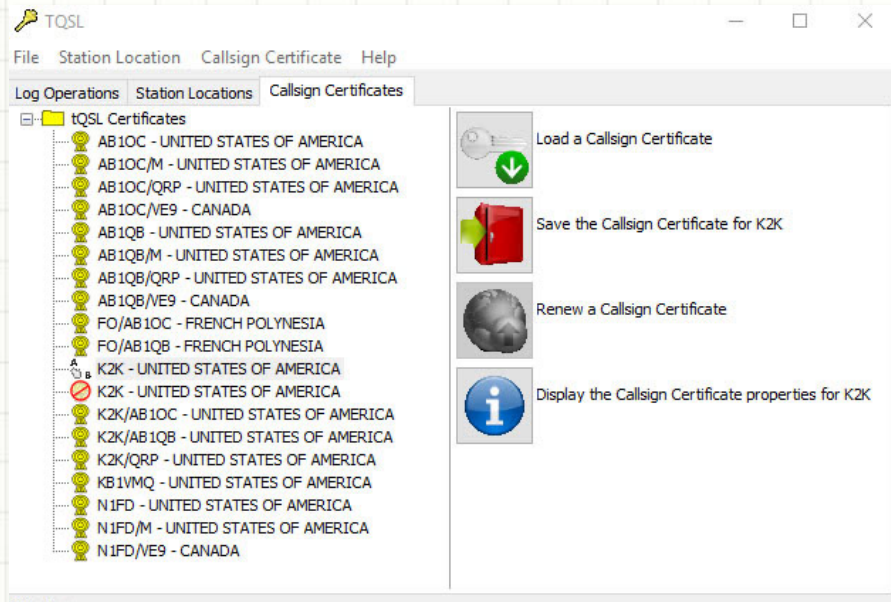


- Most stations support direct QSL'ing
- You must take steps to avoid postal theft
  - Use a secure envelope system
  - Properly package your "Green Stamps"
  - Tape outer envelope properly
- Be sure to check QSL route, manager, and return postage requirements before sending
- Can get expensive - ~\$4-5 for each successful confirmation
- Confirmations take from 2 - 6 months to receive



# QSL'ing

## LoTW



- LoTW is ARRL service (must be a member to use confirmations)
  - Accepted for ARRL awards and a few others (ex. some CQ awards)
- Upload contacts via a LoTW tool (Tqsl)
  - Register your call sign(s) and get a “certificate” from LoTW
  - Configure your operating locations and match to call signs
  - Can accomplish upload from most loggers directly (best way)
- Computer Loggers (DXLab or HRD) can be setup to upload to LoTW automatically
- Confirmations can be received within a few days, some take longer

# QSL'ing

Via QSL Bureau



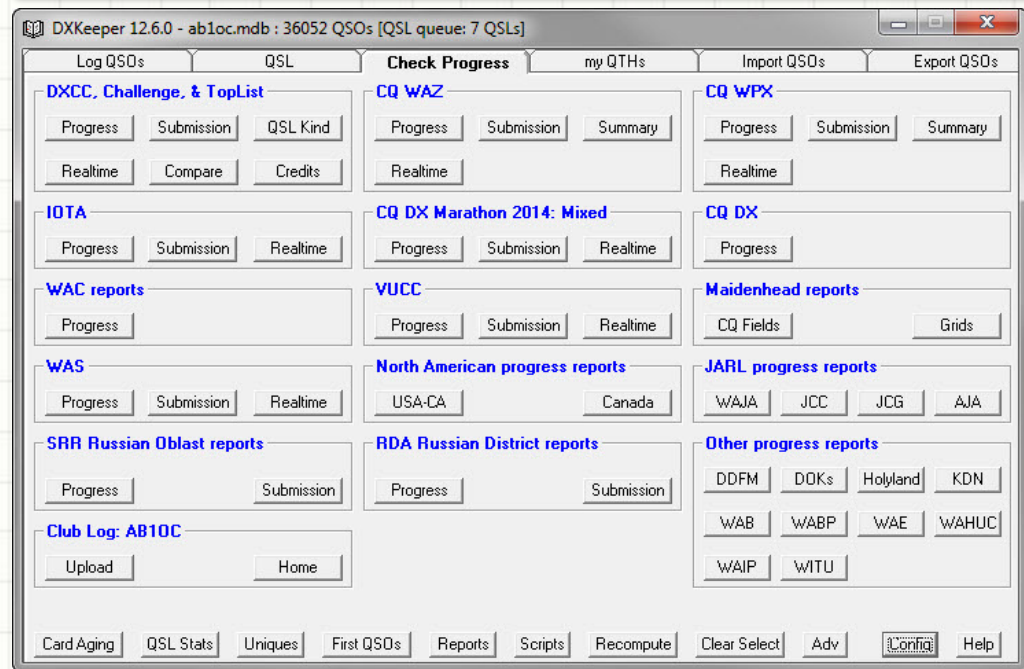
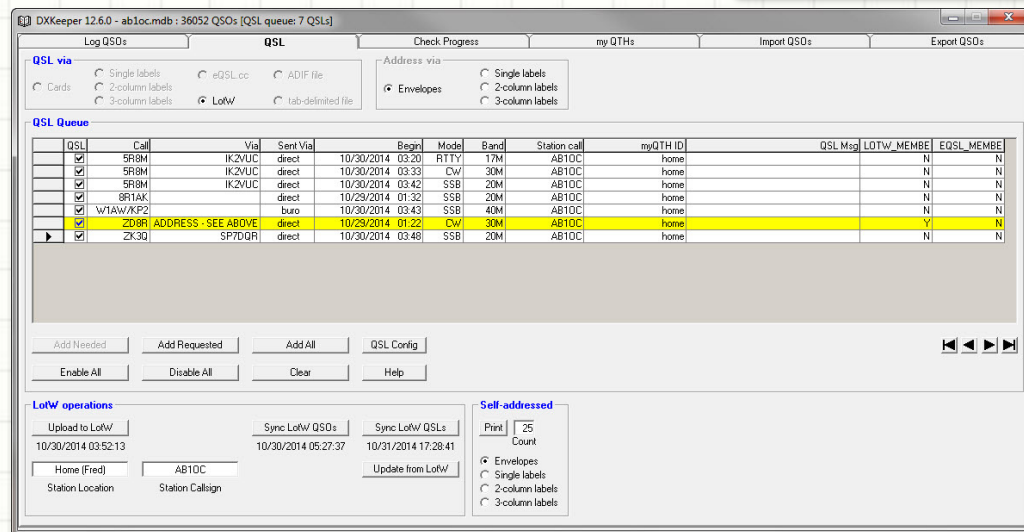
- Actually, there are two Bureaus – Outgoing and Incoming
- Many but not all countries are part of the "Buro" system – check first as not all DX stations accept Buro cards
- Outgoing Bureau – used to send cards to other countries
  - There is a fee – \$2 for 10 or fewer cards; \$3 for 11-20 cards; 75 cents/oz for >20 cards
  - Must pre-sort cards properly
  - <http://www.arri.org/outgoing-qsl-service>
- Incoming Bureau (we use the W1 Buro) - sort incoming cards and deliver them to HAMs who have an active account <http://www.w1qsl.org/>
  - There is a fee – currently \$0.10/oz plus \$0.10 service fee
- Could take 1 – 2 years to receive QSL, but can be cost effective if you want to QSL many DX contacts



# QSL'ing and Awards - DXLab



- Uploads your QSOs to LoTW, eQSL, ClubLog, etc.
- Downloads your confirmations from LoTW, eQSL
- Print Paper QSL Cards, Lookup QSL Manager, and Address Envelope
- Tracks confirmations toward popular awards



# Why Chase Awards?



- Sense of Accomplishment
- Improves your operating skills
- Allows you to set goals for operating
- Gauge where your HF station will reach
- See results when you make improvements to your station
- Decorate your shack

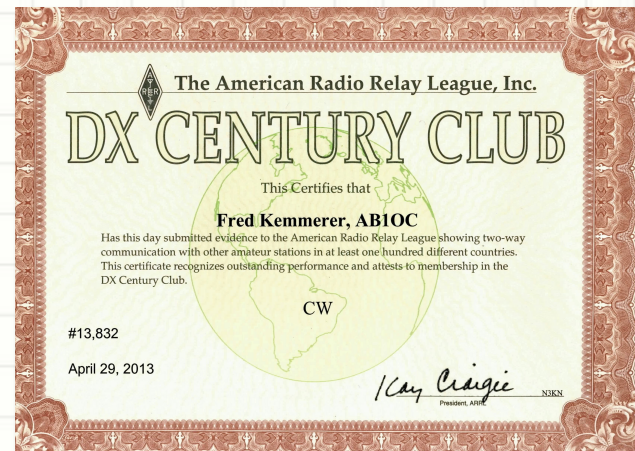


# ARRL DXCC

## DX Century Club

### The Premier Operating Award

- Mixed DXCC is the starting point – 100 DXCCs on any band or mode
- Confirmations via combination of QSL Cards and LoTW
- Many options for additional DXCC awards
  - Single Band DXCC
  - Single Mode DXCC
  - DXCC Challenge – work 1000 band points
    - Endorsements for each additional 500 band points up to 2500
  - 5 Band DXCC - 100 DXCCs on each of 10m, 15m, 20m, 40m, and 80m
    - Endorsements for 6m, 12m, 17m, 30m, 160m
- Need a DXCC Card Checker to verify all QSL cards
  - Send cards to ARRL
  - Find a local card checker – see [arrl.org](http://www.arrl.org)
  - Card checkers can be at Ham Conventions – Boxboro, Dayton, etc.
- For more info see: <http://www.arrl.org/dxcc>



# ARRL Worked All States

- Mixed WAS
  - One contact from each state
  - Any band or mode
- 5 Band WAS (Plaque)
  - One contact from each state
  - 10m, 15m, 20m, 40m and 80m
  - Endorsements for 6m, 12m, 17m, 30m, 160m
- WAS Triple Play (Plaque)
  - Work each state on CW, Digital, and SSB
  - All contacts confirmed on LoTW
- Can also get certificates for WAS on single band or single mode
- ARRL Accepts QSL Cards or LoTW confirmations – can be combined
- To apply, see <http://www.arrl.org/was>





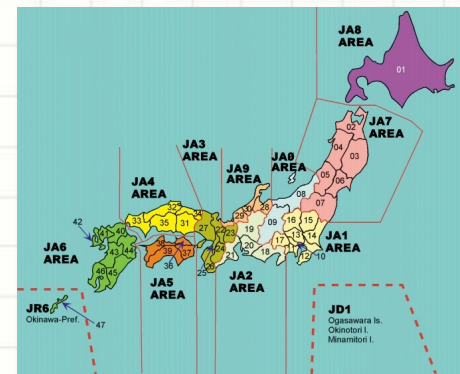
# More Awards...



Islands On The Air



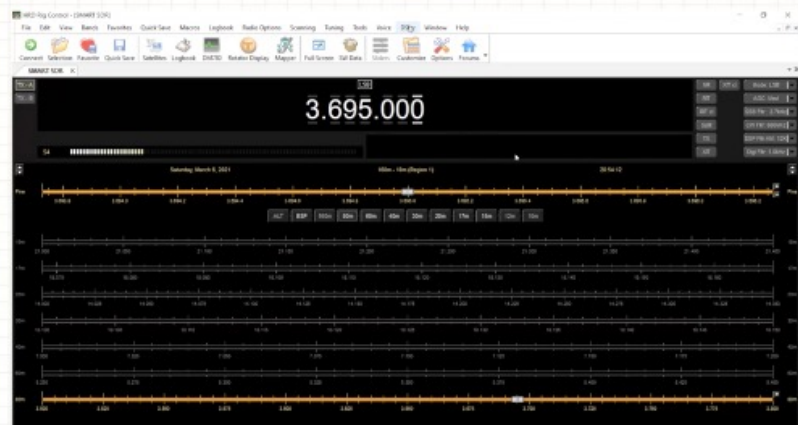
- [ARRL VUCC](#) - Confirm contacts with at least 100 Maidenhead Grid Squares on a VHF or UHF Band
- [CQ Worked All Zones Award](#) – Confirm contacts in all 40 CQ Zones
- [Worked all Prefixes Award \(WPX\)](#) – Awards for confirming contacts with different Callsign Prefixes (AB1, KC1, etc)
- [JARL Awards](#) - Japan's Amateur Radio Organization sponsors many awards – Cities, Prefectures, Countries in Asia, etc.
- [RSGB IOTA Awards](#) – Islands On The Air
- [WAE \(Worked All Europe\)](#) Awards for Working Europe DX
- [Worked All VK Call Areas](#) – HF Award for Working Australia
- [All Africa Award](#) – South African Radio League



# Learn More... Watch These Tech Nights

- **N1MM+ Contest Logger** –by AB1OC and AB1QB, May 2021
- **Computer Loggers, Ham Radio Deluxe and DXLab Suite** by Dave Merchant, K1DLM and Fred Kemmerer, AB1OC – March 2021
- **Understand and Using Propagation to Work the World** by Anita Kemmerer, AB1QB – February 2021
- **QSL'ing and Awards** by Anita Kemmerer, AB1QB - 2019
- <https://www.n1fd.org/tech-night/> - Available to Members and Internet Subscribers

## Rig Control Features



## Topics

- **HF Propagation**
  - Its all about the Ionosphere
  - Layers of the Ionosphere
  - The Sunspot Cycle
  - Other modes: TEP, Greyline, Backscatter, and more
  - The bad: Solar Flares and CMEs and the D-Layer
  - Software Propagation Predictions
- **VHF/UHF Propagation**
  - 6 Meters – The Magic Band - its all about the E layer
  - 2 Meters and Tropo
  - Software Propagation Predictions





# Questions?

## To Learn More:

Check out the Nashua Area Radio Society's Tech Night Program at:

[n1fd.org/tech-night](http://n1fd.org/tech-night)

Become an Internet Subscriber (or members of NARS):

[n1fd.org/join-us](http://n1fd.org/join-us)

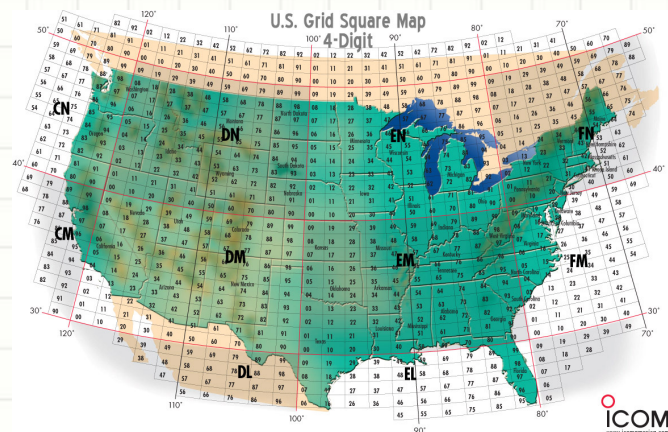
Much more information, pictures and video are available on our Blog at:

[stationproject.blog](http://stationproject.blog)



# ARRL VUCC

## VHF/UHF Century Club



- Confirm contacts with at least 100 Maidenhead Grid Squares on a VHF or UHF Band
- Most common are 50 MHz, Satellite, 144 MHz
  - Endorsements for each additional 25 credits
- For 432 MHz, need to work 50 Grid Squares
- Confirmation can be LoTW or QSL Cards
- “Fred Fish Memorial Award” award for confirming all 488 Grid Squares in the 48 continuous United States on 6 Meters (there have only been 9 Recipients)



# Configuring Your Logger

## DXLab Suite



- What You Need –
  - A Windows computer with internet connection (Mac and Linux with VM also works)
  - CAT, PTT, CW Keying and Audio Interfaces (for digital modes) between your PC and your Transceiver
  - Computer interface to your rotator if you have a directional antenna
- Configuration Steps –
  - Basic information about you and your station – Name, Callsign, QTH Info,

**DXKeeper Configuration**

General Log Awards Reports Callbook Contest User Items Defaults

Station callsign: AB10C  
Operator callsign: AB10C  
Owner callsign: AB10C  
QTH latitude: 42° 42' 45" N  
QTH longitude: 71° 40' 30" W  
Transmit power: 175  
RST sent & rcvd: 59/599

Antenna Path: [dropdown]  
Propagation mode: [dropdown]  
SFI / A / K: 70 4 1  
Satellite name: [dropdown]  
Satellite mode: [dropdown]  
Meteor shower: [dropdown]  
Email address: ab10c@arrl.org

**Default QSL Message**

QSL msg: Thanks for the QSO, 73 Fred  
Update Candidate Message #1 Review Candidate Messages

**Default Transmit power by band**

Band	Power
160m	1500
80m	1500
60m	100
40m	1500
30m	200
20m	1500
17m	1500
15m	1500

**Default Transmit power by mode**

Mode	Power
Phone	1500
CW	1500
RTTY	1500
FT8	50
Digi	1000

**Network Service [port 52001]: Listening**

Base Port: 52000 Default Restart

Log all transactions [checkbox] Display Log

**DXKeeper 15.8.9 [CC,DXV,SC] - ab10c.mdb : 88630 QSOs**

Log QSOs QSL Check Progress my QTHs Import QSOs Export QSOs

ID: Home Rig: Flex-6700 CQ: 5 ITU: 8  
Email: ab10c@arrl.org Ant: [dropdown]  
Name: Fred Kemmerer Street: 39 Baldwin Lane IOTA: [dropdown]  
Pri sub: NH City: Hollis PostCode: 03049  
Sec sub: Hillsborough Country: United States Grid: FN42er  
Sig: [dropdown] Sig Info: [dropdown] Latitude: 42° 43' N  
LotW: [dropdown] Longitude: 71° 37' W

**Find myQTH ID** **Update QSOs in Log Page Display**  
Set myQTH ID Clear myQTH ID

VUCC [checkbox] Lat/Lon: DMS [checkbox]  
WAS [checkbox] DD [checkbox]

New Save Delete Filter Config Help

MYQTHID	City	Sec sub	Pri sub	Country	Grid
Home	Hollis	Hillsborough	NH	United States	FN42er
Mobile HF	Hollis	Hillsborough	NH	United States	FN42
Mobile HF - VE				Canada	
Mt. Kearsarge				Coos	FN43
Mt. Washington	Sargents Purchase			Coos	FN44
Palm Beach FL	Palm Beach		FL	United States	EL96xo
Scottsdale AZ	Scottsdale		AZ	United States	DM43am

# Configuring Your Logger

## Some Final Thoughts



- ✓ Computer Loggers have many useful features
- ✓ Best to start out with the basics
  - Get your logger talking to your Radio
  - Configure callsign lookups via QRZ.com
- ✓ Setup a Bridge Program for Digital Operations to automatically log these contacts (ex. WSJT-X and JTAlert for FT8)
- ✓ Add LoTW as soon as you can and begin uploading your contacts and downloading online confirmations
- ✓ Add Award Tracking, Rotators, Spotting Clusters, Paper QSL'ing, and more as your needs and interests progress



# Configuring Your Logger

## Connecting Your Radio



- Your Radio will appear as a COM port in your PC
- Set Radio Type and Address Information (RTFM)
- Match Baud Rate and set means for PTT control

Commander Configuration

Filter Groups | Memories | MultiRadio | Bandsread | Transverters

General | Ports | Device 0 | Device 1 | Device 2 | Device 3

### Radio

IC-7851 Model 8E CI-V Address Default: 8E 16 ☒ Hexadecimal ☐ Decimal Reset

☒ Interrogation 200 Command interval (ms) 1 Scan dwell Display Error Log

☐ No interrogation while transmitting

☐ Verify CI-V command acceptance

☒ Sync transceiver frequencies before logging or spotting

☒ Set radio UTC time on startup or selection, and hourly

☐ Emit subreceiver audio when dual receive enabled

☐ Display outgoing CI-V commands in Message window

Log Mode for Data-L or Data-U

### General

☒ Ignore Mousewheel

☒ Accept 'Dual Rcv On' directives

☒ Accept 'Dual Rcv Off' directives

☐ Use TX freq for devices when split

☐ Switch to simplex on 1 MHz QSY

☒ Use multiple monitors

☐ Log debugging info

### PTT

TX RX

☐ suppress CAT

### Frequency Colors

In Out Back Def

☐ ☐ ☐

### Sub-band Defs

Edit Reload

### VFO Autorepeat Rate

slow fast

### User-defined Controls

☐ Show within Main window

☐ Show by expanding Main window

### Initial Command

### Initial Command Sequence

☐ Enable Edit

### Guidance

Select

Browser pathname ☒ show control explanations Help

Commander Configuration

Filter Groups | Memories | MultiRadio | Bandsread | Transverters

General | Ports | Device 0 | Device 1 | Device 2 | Device 3

### Primary CAT Serial Port

Port#	Baud	Word	Parity	Stop	DTR	RTS
1	9600	8	None	2	Off	TX

### Secondary CAT Serial Port

☒ Enable ☒ Follow primary ☐ Lead primary ☐ Follow & lead primary

CAT protocol Elecraft ☐ Update every 200 ms

☐ Follow Alternate VFO when Split

Port#	Baud	Word	Parity	Stop	DTR	RTS
	9600	8	None	2	Off	Off

### S02R Serial Port

☒ Enable

S02R protocol microHam

Port#	Baud	Word	Parity	Stop	DTR	RTS
8	9600	8	None	2	Off	Off

### ACC Outputs

☐ Enable  Device  Control

### Parallel Port

☐ Enable Radio & PTT

Port	Port Address
	0000

### Data Signals

☐ Enable  Device  Control

### Modem Command

Send

Scomm version: 9.1.12 Help

# Configuring Your Logger

## Callsign Lookup and QSL'ing



- Callsign Lookup – Use your QRZ.com account
- Online QSL'ing – Use your LoTW, eQSL, and ClubLog Accounts
- Paper QSL'ing – Setup to print cards, labels, and envelopes

**DXKeeper Configuration**

General Log Awards Reports **Callbook** Contest User Items Defaults

**Primary Callbook**

☐ None Passwords specified in this panel will appear in generated errorlog.txt files when "Log debugging information" is enabled; do not employ passwords that you also use to secure valuable online accounts!

☐ RAC (PC) D:\ Browse  
Folder containing callbook info

☐ HamCall (PC) C:\Users\Fred Kemmerer\Dropbox\Amateur Radio\HamCall\ Browse  
Folder containing callbook info

☐ QRZ (PC) D:\ Browse  
Folder containing callbook info

☐ HamCall Online  
Callsign Password HamCall Online timeout (seconds) 30

☐ HamQTH  
Callsign Password HamQTH timeout (seconds) 30

**QRZ.com**

☒ XML Data AB10C Password QRZ.com timeout (seconds) 30  
Callsign Password

☐ QRZ.com via Pathfinder Pathfinder is not running ☒ Ignore geocoded grid squares

**Secondary Callbook**

☒ Enable HamCall (PC) Callbook

☒ Warn when the primary callbook can't be accessed

☒ Automatically use callbook data to initialize new QSOs

☒ Warn when a callbook lookup returns "callsign not found"

Help

**DXKeeper QSL Configuration**

General **LoTW** Cards QSL Labels Envelopes Addr Labels ADIF & TDF Printer QSL Msgs Club Log

Username \* AB10C

Password to web account Update Password

Upload each QSO logged via the Capture window to LoTW ☐

Initialize LoTW Sent to 'R' for each logged QSO or imported QSO ☒

Consider LoTW confirmations in outgoing card/label QSL? 'please! /thanks!' decisions ☐

Permit uploading of QSOs already uploaded to LoTW ☐

PC has no internet connection (prompt operator to upload/download on another PC) ☐

Maximum age of most recent LoTW upload to be considered "active" (months)

Limit Sync operations to this station callsign \*

Report unmatched QSOs and QSLs as errors \* ☐

Exclude station callsign when matching downloaded QSOs & QSLs to logged QSOs \* ☐

**Handling of LoTW QSL detail inconsistencies**

Overwrite log data with LoTW data, and report inconsistencies when operation ends ☒

Preserve log data, ignore LoTW data ☐

Preserve log data, ignore LoTW data, and report inconsistencies when operation ends ☐

Display a dialog box and let operator choose, and report inconsistencies when operation ends ☐

Ignore subsquare mismatches ☐

**TQSL 2.5.5**

TQSL.exe pathname C:\Program Files (x86)\TrustedQSL\tqsl.exe Select Run

station location \* Home (Fred) Update

station callsign \* AB10C specified in Station Location

Update LoTW Membership \* setting is stored in the current Log file Help



# Configuring Your Logger

## Spotting Clusters and Award tracking



- DX Spotting – set DX Clusters, CW and Digital Clusters, & RBNs
- Configure Awards – DXCC, WAS, WAZ, IOTA, Marathon, VUCC, ... Including bands, modes and real-time tracking

SpotCollector Configuration

**Email Alarm** **Audio Alarm** **Special Callsigns** **Spot Source Display** **TNC Serial Port**

**General** **Spot Sources** **Spot Database Display** **Spot Database** **Overrides**

**Telnet DXClusters**

Enable	Auto	Hide	Ann/Talk	Host address	Port	Caption	Username	Password	Cmd	Spot
<input checked="" type="checkbox"/>	<input checked="" type="checkbox"/>	<input checked="" type="checkbox"/>	<input type="checkbox"/>	dxcc.ve7cc.net	23	VE7CC	AB10C			<input type="checkbox"/>
<input checked="" type="checkbox"/>	<input checked="" type="checkbox"/>	<input checked="" type="checkbox"/>	<input type="checkbox"/>	telnet.reversebeacon.net	7001	Digi RBN	AB10C			<input type="checkbox"/>
<input checked="" type="checkbox"/>	<input checked="" type="checkbox"/>	<input checked="" type="checkbox"/>	<input type="checkbox"/>	dxfun.com	8000	RBN Spots	AB10C			<input type="checkbox"/>
<input checked="" type="checkbox"/>	<input checked="" type="checkbox"/>	<input checked="" type="checkbox"/>	<input type="checkbox"/>	telnet.reversebeacon.net	7000	CW-RTTY RB	AB10C			<input type="checkbox"/>

**PacketCluster**

Enable	Auto	Hide	Ann/Talk	Callsign	Keep	Caption	Bye Cmd	TNC Model	Cmd	Spot
<input type="checkbox"/>	<input type="checkbox"/>	<input type="checkbox"/>	<input type="checkbox"/>		<input type="checkbox"/>					<input type="checkbox"/>

**IRC**

Enable	Auto	Hide	Ann/Talk	Host address	Channel	Caption	Username	First Name	Robot	Spot
<input checked="" type="checkbox"/>	<input checked="" type="checkbox"/>	<input checked="" type="checkbox"/>	<input checked="" type="checkbox"/>	irc.radiochat.org	CQDX	DX Summit	AB10C	AB10C	<input checked="" type="checkbox"/>	<input type="checkbox"/>

**WSJT-X**

Enable	CQ color	MyCall color	Port	Lookup	Callbook	eQSL	LoTW	ClubLog
<input type="checkbox"/>	<input checked="" type="checkbox"/>	<input checked="" type="checkbox"/>	2237	<input checked="" type="checkbox"/>	<input checked="" type="checkbox"/>	<input checked="" type="checkbox"/>	<input checked="" type="checkbox"/>	<input checked="" type="checkbox"/>

**Initial Cluster command**

Enable	Command
<input checked="" type="checkbox"/>	SH/DX

☐ alert when Talk msq rcvd

Audio message alert pathname:

DXKeeper Configuration

**General** **Log** **Awards** **Reports** **Callbook** **Contest** **User Items** **Defaults**

☒ Automatically recompute realtime award tracking  
☒ Deduce CQ and ITU zones from US callsigns

☐ Include LoTW QSLs in CQ (DX, Fields), JARL, & Maidenhead Grid progress  
☐ Include eQSL.cc QSLs in DXCC, VUCC, WAS, WAC, & Maidenhead Grid progress

**DXCC Bands & Modes**

Band	Mode	HF	VHF
<input checked="" type="checkbox"/> 160M	<input checked="" type="checkbox"/> Phone	<input type="checkbox"/>	<input type="checkbox"/>
<input checked="" type="checkbox"/> 80M	<input checked="" type="checkbox"/> CW	<input type="checkbox"/>	<input type="checkbox"/>
<input checked="" type="checkbox"/> 40M	<input checked="" type="checkbox"/> Digital	<input type="checkbox"/>	<input type="checkbox"/>
<input checked="" type="checkbox"/> 30M			
<input checked="" type="checkbox"/> 20M	FT8		
<input checked="" type="checkbox"/> 17M	User-specified digital mode family		
<input checked="" type="checkbox"/> 15M			
<input checked="" type="checkbox"/> 12M	FT8		
<input checked="" type="checkbox"/> 10M			
<input checked="" type="checkbox"/> 6M			
<input checked="" type="checkbox"/> 2M	QRP		

☒ Hide unworked in progress rpt

**Marathon Bands & Modes**

Band	Mode	HF	VHF
<input type="checkbox"/> 160M	<input type="checkbox"/> Phone	<input type="checkbox"/>	<input type="checkbox"/>
<input type="checkbox"/> 80M	<input type="checkbox"/> CW	<input type="checkbox"/>	<input type="checkbox"/>
<input type="checkbox"/> 60M	<input type="checkbox"/> Digital	<input type="checkbox"/>	<input type="checkbox"/>
<input type="checkbox"/> 40M			
<input type="checkbox"/> 30M	Mixed		
<input type="checkbox"/> 20M			
<input type="checkbox"/> 17M			
<input type="checkbox"/> 15M			
<input type="checkbox"/> 12M			
<input type="checkbox"/> 10M			
<input type="checkbox"/> 6M			
<input type="checkbox"/> 2M			

☐ Realtime Award Progress

**WPX Bands & Modes**

Band	Mode	HF	VHF
<input type="checkbox"/> 160M	<input checked="" type="checkbox"/> SSB	<input type="checkbox"/>	<input type="checkbox"/>
<input type="checkbox"/> 80M	<input checked="" type="checkbox"/> CW	<input type="checkbox"/>	<input type="checkbox"/>
<input type="checkbox"/> 60M	<input checked="" type="checkbox"/> Digital	<input type="checkbox"/>	<input type="checkbox"/>
<input type="checkbox"/> 40M			
<input type="checkbox"/> 30M	Mixed		
<input type="checkbox"/> 20M			
<input type="checkbox"/> 17M			
<input type="checkbox"/> 15M			
<input type="checkbox"/> 12M			
<input type="checkbox"/> 10M			
<input type="checkbox"/> 6M			

☐ Realtime Award Progress

**IOTA**

☒ IOTAmen4win update  
☒ Realtime Award Progress

**Other Awards**

☐ CQ, WAE, Holyland region select  
☐ DARC DOK region selection  
☐ WAE 2 point low-band QSOs  
☒ Subdivision validity checking

**WAZ Bands & Modes**

Band	Mode	HF	VHF
<input type="checkbox"/> 160M	<input type="checkbox"/> Phone	<input type="checkbox"/>	<input type="checkbox"/>
<input type="checkbox"/> 80M	<input type="checkbox"/> CW	<input type="checkbox"/>	<input type="checkbox"/>
<input type="checkbox"/> 40M	<input type="checkbox"/> RTTY	<input type="checkbox"/>	<input type="checkbox"/>
<input type="checkbox"/> 30M	<input type="checkbox"/> Digital	<input type="checkbox"/>	<input type="checkbox"/>
<input type="checkbox"/> 20M	<input type="checkbox"/> SSTV	<input type="checkbox"/>	<input type="checkbox"/>
<input type="checkbox"/> 17M			
<input type="checkbox"/> 15M	<input checked="" type="checkbox"/> Sat		
<input type="checkbox"/> 12M			
<input type="checkbox"/> 10M	<input type="checkbox"/> QRP		
<input type="checkbox"/> 6M			
<input type="checkbox"/> 2M	<input checked="" type="checkbox"/> Mixed (Basic)		
<input type="checkbox"/> 1.25M			
<input type="checkbox"/> 70CM			

☒ Realtime Award Progress

**DXCC Submission**

☒ Submit deleted entities  
 75 Record Sheet lines/page

**Marathon Submission**

☒ Confirmed QSOs are low risk

**VUCC & WAS Submission**

☒ QSL Card  
☐ LoTW

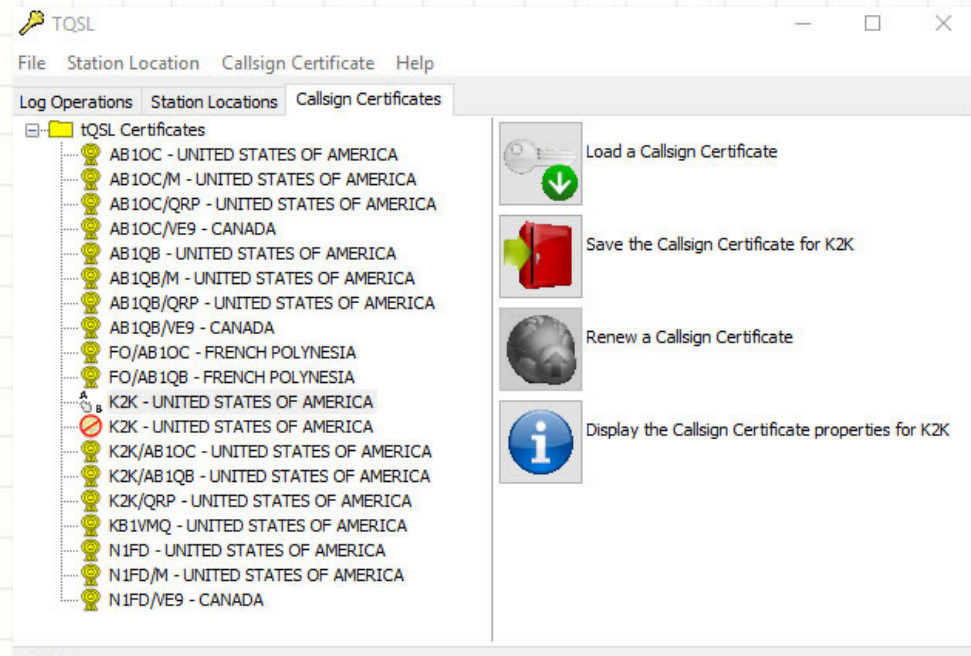
**DXCC Credits**

☒ Credit-only QSO creation

Real-Time Tracking can alert you when a station needed for an Award is On The Air

# DXLab and LoTW

- LoTW is an ARRL QSL'ing service
  - Accepted for ARRL awards and a few others (ex. some CQ awards)
- Upload contacts via a special tool (Tqsl)
  - Register your call sign(s) to get "certificate" from LoTW
  - Configure your operating locations and call signs
  - Automatically upload from DXLab (best way)



## DXLab LoTW Setup Instructions

### Initial Setup

- [Setting up LotW on your PC](#)
- [Configuring DXKeeper for Interaction with LotW](#)
- [Handling QSOs already uploaded to LotW](#)

### [Uploading QSOs to LotW](#)

### [Synchronizing QSLs: Updating logged QSOs to reflect their Confirmation via LotW](#)