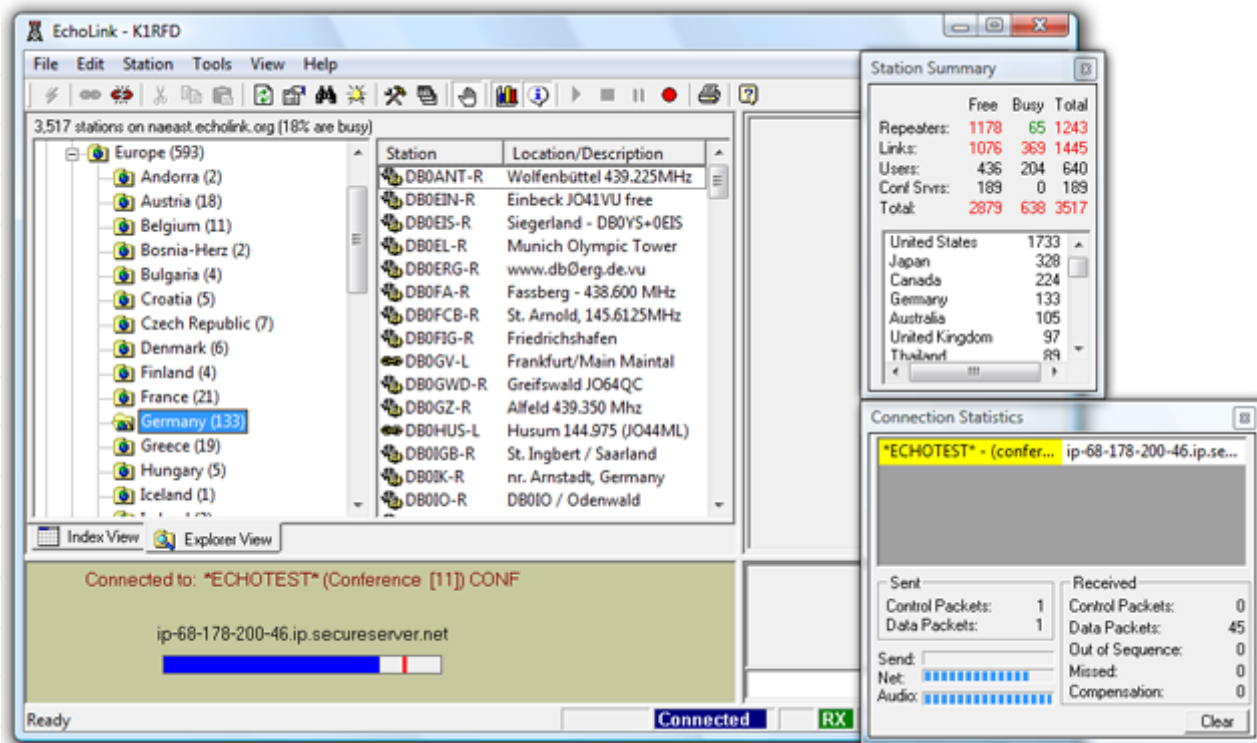


Note: We will be recording all Bootcamp Sessions. Anyone not wishing to be recorded should mute their video or disconnect.



# GETTING STARTED WITH ECHO LINK

Nashua Area Radio Society

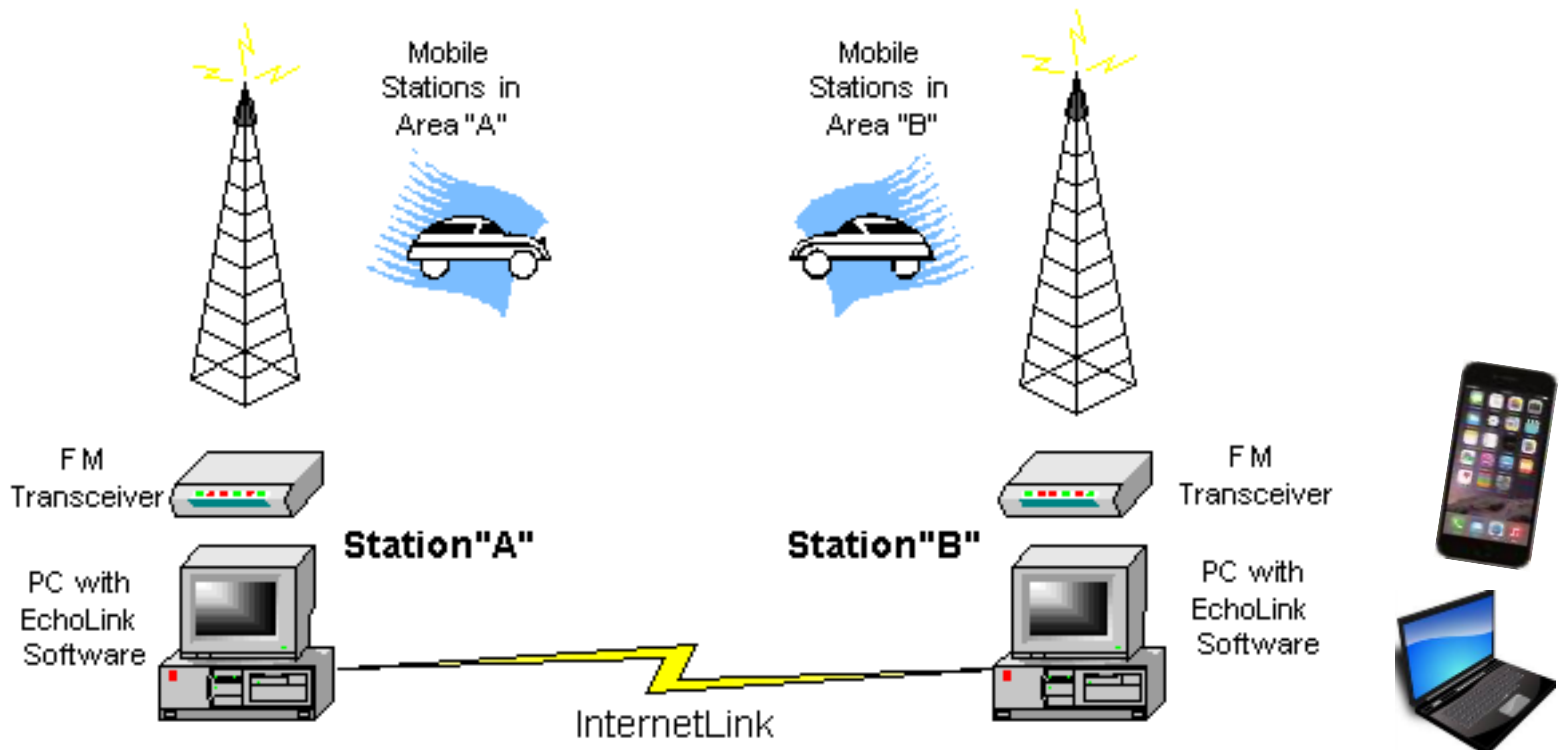
Fall 2020

©Nashua Area Radio Society and AB1OC, All Rights including recording in any form are reserved.

# EchoLink

Access Repeaters from your PC or Smartphone

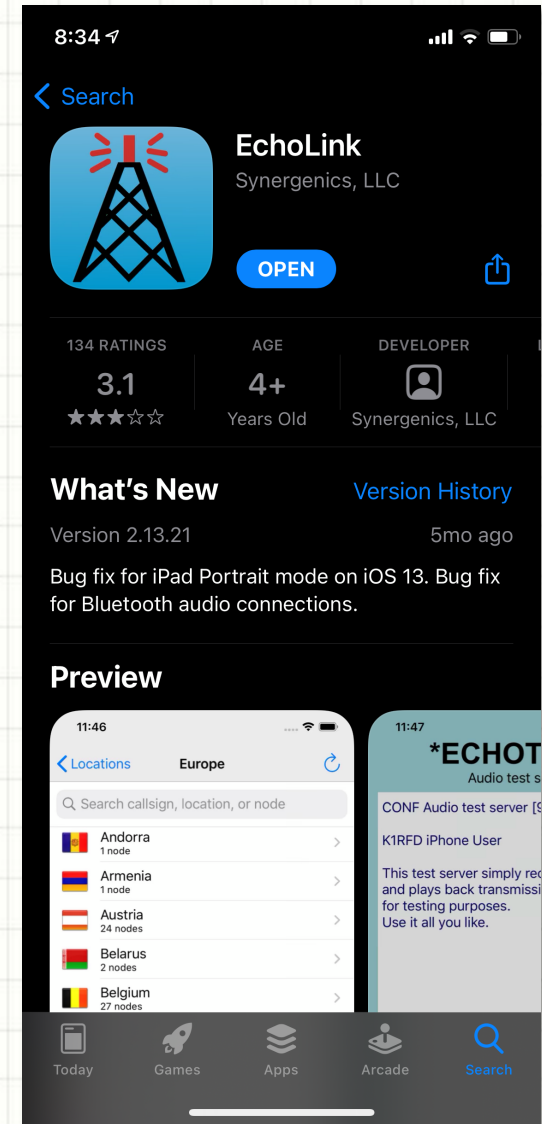
## Linking Example



<http://www.echolink.org>

# How do I Get Started with Echolink?

- Go to <http://echolink.org> to download and install the software
  - **Echolink** app for Windows / **EchoHam** app on Mac
  - Running the software registers your callsign.
- Validate your callsign – upload a copy of your FCC License –  
<http://www.echolink.org/validation>
- Computer needs a network connection and a microphone/speaker
- Smartphone Apps are also available



# Validate Your Callsign


## One Time Only

EchoLink Validation

Nashua Area

← → ↻ 🏠 ⓘ www.echolink.org/validation/ ☆ 📶 🔒 ⋮

📱 Apps 📄 Press This! 🖨️ Press This! 🖨️ Our HAM Station 🖨️ NARS 🖨️ WP Admin 🖨️ Scripts ☁️ Cloudflare ✅ Tasks 📊 Analytics » 📁 Other bookmarks



### Validation

EchoLink opens a world of new communications possibilities by joining Amateur Radio stations over the Internet. Since the Internet is a shared, public resource, security is naturally a very important part of the system.

Each new user of EchoLink must provide proof of license before access is granted. This is to ensure that only licensed Amateurs have access to the system, and to ensure that each user is using a valid callsign that he or she is authorized to use.

There are several different ways you can provide proof of license. These options vary somewhat by country. The various options will be explained on the pages that follow.

First, please be sure that you have downloaded, installed, and **run** the EchoLink software. This registers your callsign with the system. Then, please enter your callsign below, and click Continue.

Callsign:

#### Other Validation Tasks

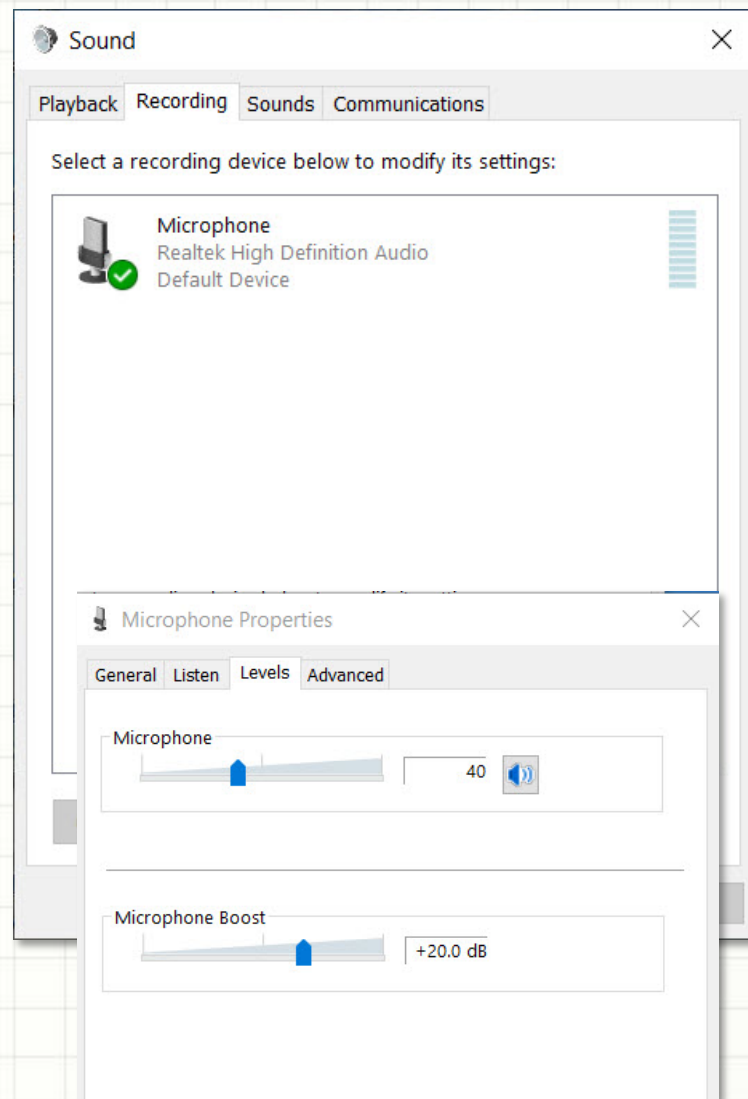
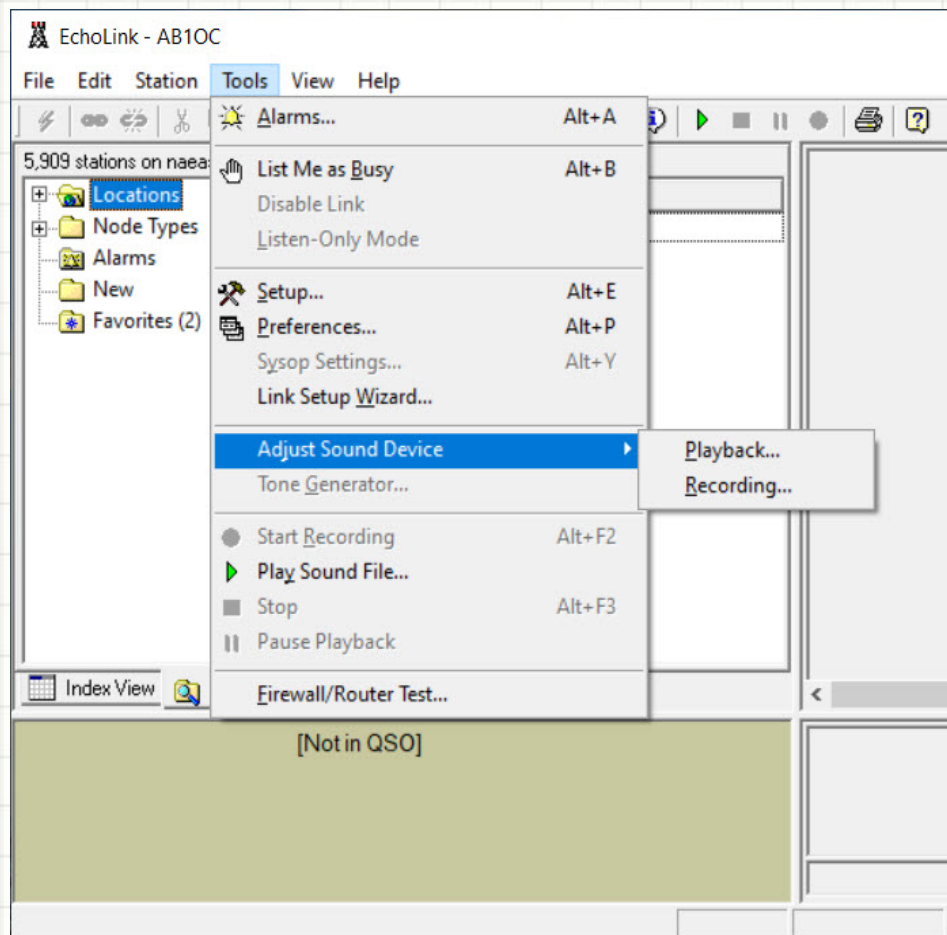
- [Change Your Password](#)
- [Change Your Callsign](#)
- [Change Your E-Mail Address](#)
- [Swap Node Numbers](#)
- [Get a Password Reminder](#)

#### More Information

- [Callsign Validation FAQ](#)
- [Authentication](#)
- [Validation Documents](#)
- [Access Policies](#)

# Audio Setup in EchoLink

## Set Audio Devices and Mic Level

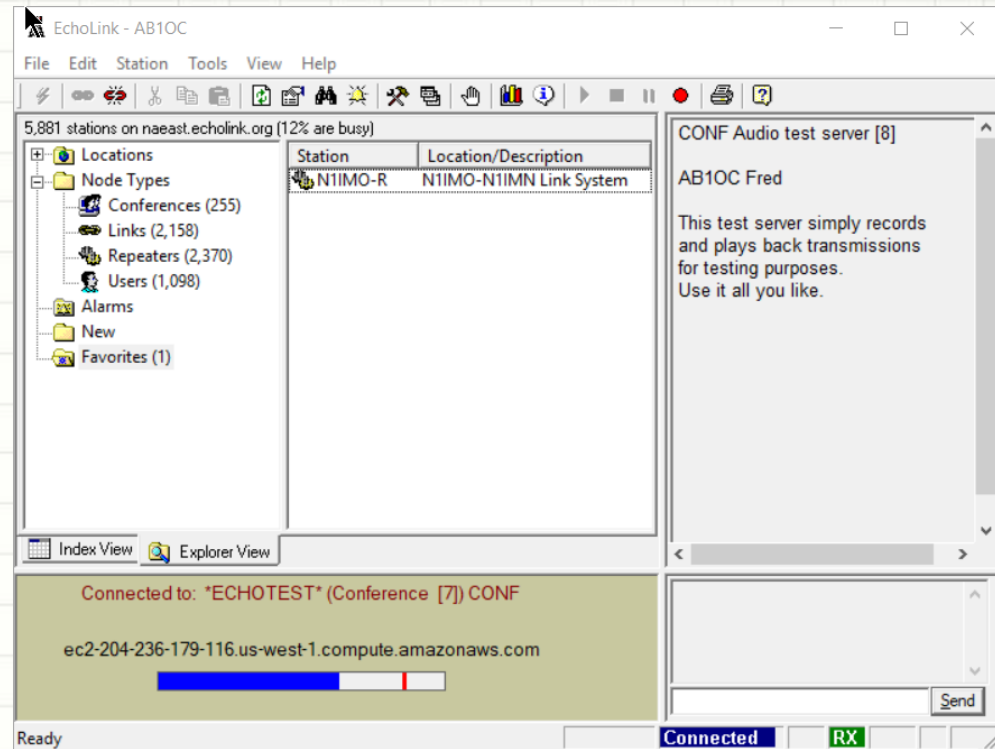
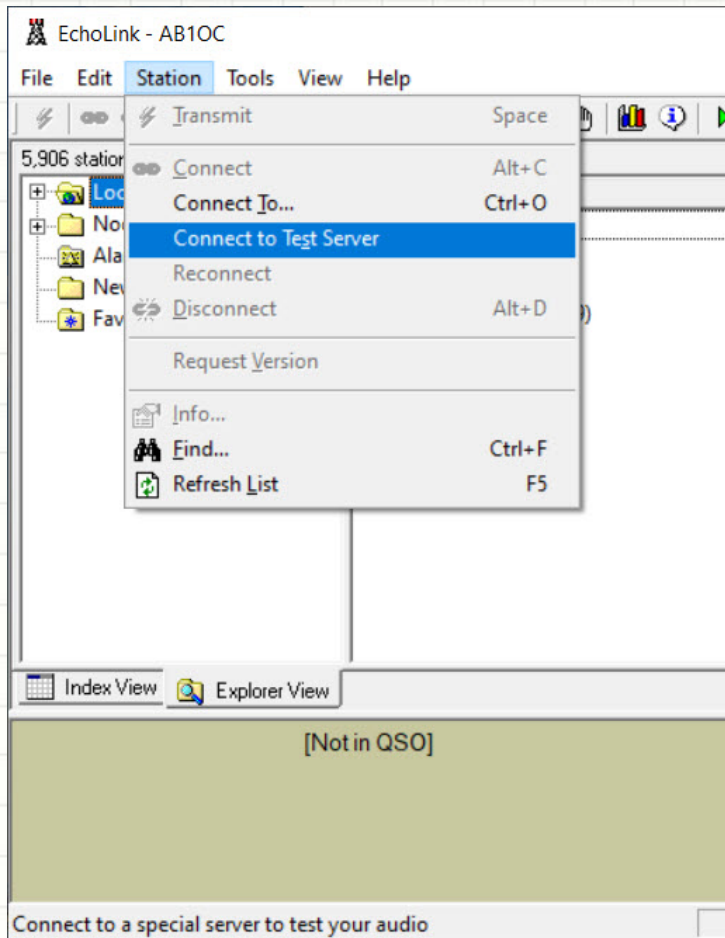


Set your input and output sound device via Windows (or Mac) settings



# Audio Setup in EchoLink

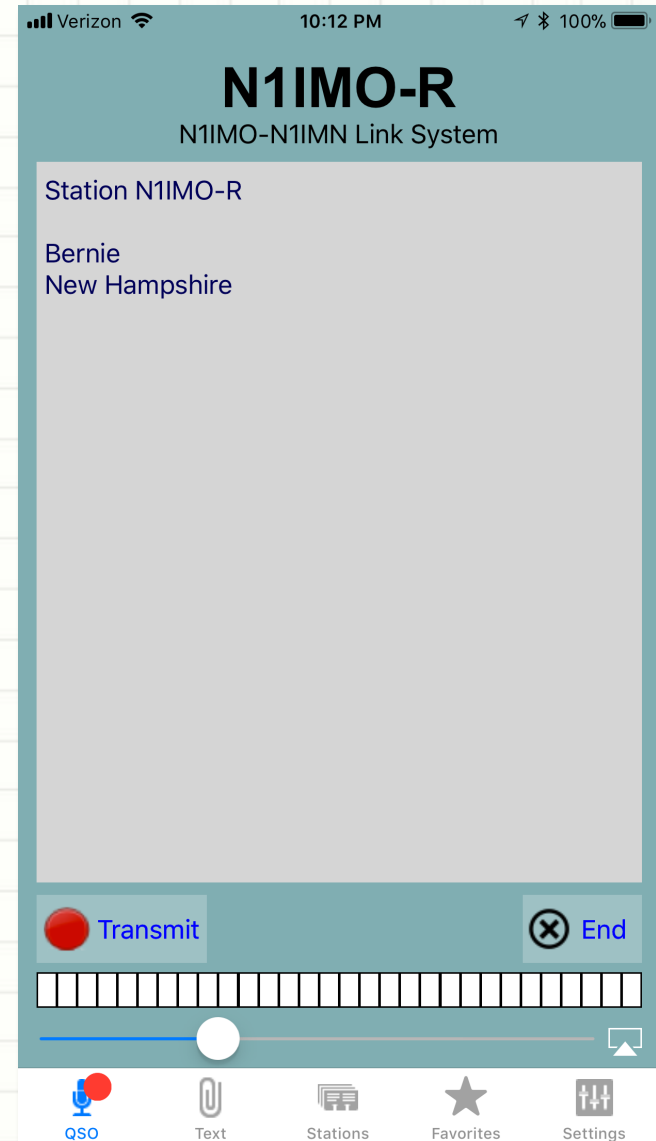
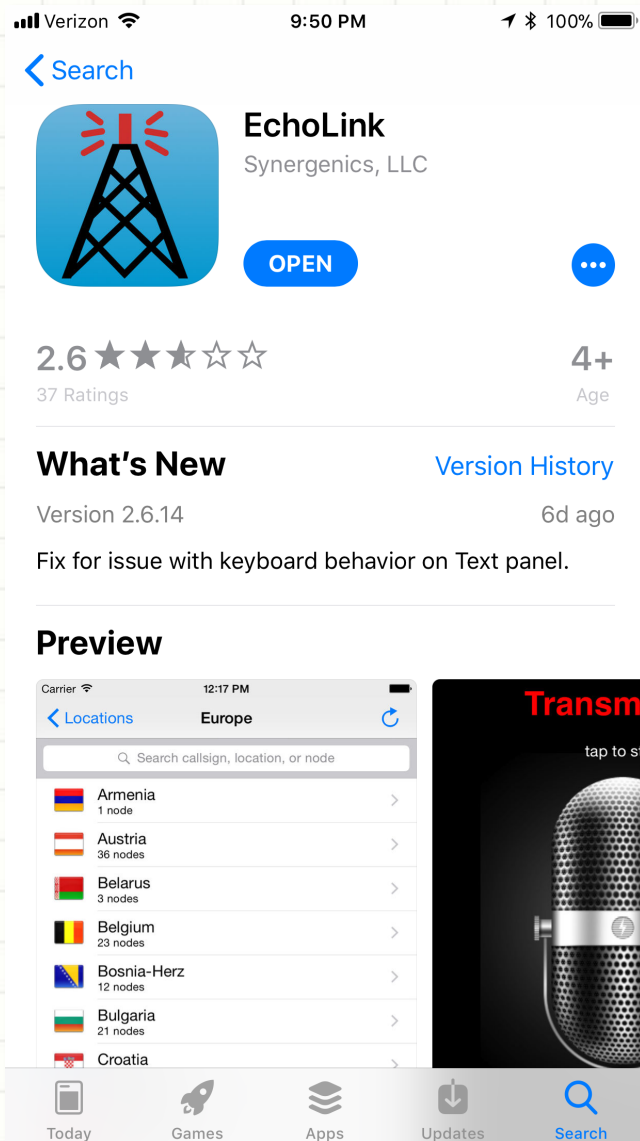
## Using the EchoLink Test Server to Test Your Audio



- Check your audio using EchoLink Test Server
- Adjust your mic gain as needed to get clear audio during playback

# Turning Your Smartphone into a Radio

## The EchoLink App



# Join Our Weekly Repeater Net

## N1IMO-R Repeater System

NARS repeater net is held on Sunday Evenings at 7:30 pm ET on the [N1IMN-N1IMO Repeater System](#)

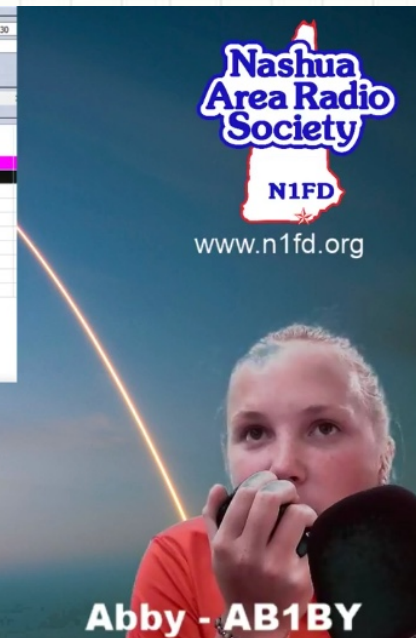
The screenshot shows the N1IMO-R Repeater System interface. At the top, there's a status bar with a digital clock showing 23:31. Below it, a control panel includes buttons for 'Close Net', 'Stop Logging', 'AIM Window', 'View Monitors', and 'Log Contact'. A 'Check-ins' table is visible with columns for #, Call Sign, M/P, Preferred Name, State, Member Id, Remarks, City, and Name. Two entries are shown: 1 AB1BY (Abby, NH) and 2 AC1DK (Jamey, NH). Below the table, a section titled 'N1IMO-N1IMN Repeater System Access Info:' lists various repeater locations and their frequencies, including Brookline, Derry, Goffstown, Hollis, Nashua, Peterborough, Pittsfield, and Rindge, NH.

#	Call Sign	M/P	Preferred Name	State	Member Id	Remarks	City	Name
1	AB1BY		Abby	NH			Nashua	Abigail J Fincham
2	AC1DK		Jamey	NH			Nashua	James W Fincham
3								
4								
5								
6								
7								
8								
9								
10								

**N1IMO-N1IMN Repeater System Access Info:**

Location	Frequency	Offset
Brookline, NH	53.410	Minus offset PL 88.5
	146.130	Remote Receiver for 146.73 Minus offset PL 151.4
Derry, NH	146.130	Remote Receiver for 146.73 Minus offset PL 127.3
Goffstown, NH	224.500	Minus offset PL 88.5
Hollis, NH	146.730	Minus offset PL 88.5
	443.900	Plus offset PL 88.5
Nashua, NH	448.825	Minus offset PL 88.5
Peterborough, NH	449.375	Minus offset PL 88.5
Pittsfield, NH	146.790	Minus offset PL 88.5
	442.150	Plus offset PL 88.5
Rindge, NH	147.195	Plus offset PL 88.5

EchoLink Node: N1IMO-R



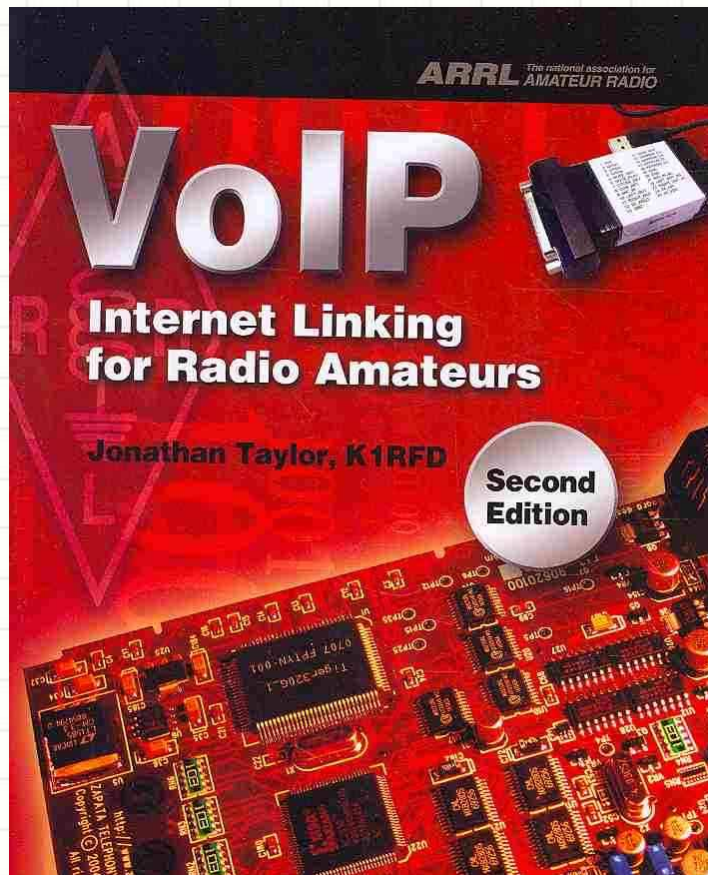
- Accessible to Amateurs outside our local area via *EchoLink* – **N1IMO-R**
  - Check in to the net and then answer a question
  - Includes information about upcoming NARS Activities and Events
- Great way to try/practice what you've learned at Bootcamp
- Hope to hear you on our next Repeater Net!



# EchoLink

## More Information & Help

- EchoLink User's Guide
  - From [echolink.org](http://echolink.org)



## Support

[\[Deutsch\]](#)

[Home](#)

[Up](#)

[FAQ - General](#)

[FAQ - Installation](#)

[FAQ - Callsign Validation](#)

[FAQ - Servers](#)

[FAQ - Connecting](#)

[FAQ - Operating](#)

[FAQ - Advanced Operating](#)

[FAQ - Audio](#)

[FAQ - iPhone](#)

[FAQ - Android](#)

[Firewall Solutions](#)

[Authentication](#)

[Validation Documents](#)

[Access Policies](#)

EchoLink is offered free of charge to the Amateur Radio community, and is supported by a network of volunteers.

Experience has shown that the majority of questions about EchoLink are similar, and can be answered by reading the Help documentation or one of the Frequently-Asked Questions sections. Most likely, you'll find that your particular question or problem has already been answered or addressed.

[NEW Windows 7/8/10 and Windows Vista Information](#)

Please choose one of the links below to find answers to frequently-asked questions.

[General Topics](#)

[Installing the Software](#)

[Callsign Validation and Passwords](#)

[Problems Connecting to Other Stations](#)

[Problems Connecting to Servers](#)

[Basic Operation](#)

[Advanced Operation](#)

[Audio Issues](#)

[EchoLink for iPhone](#)

[Firewall Solutions](#)

[EchoLink Proxy](#)

[Conference Servers](#)

If you are writing about a possible bug, please first check the section [Known Bugs](#) to see if the issue has already been discovered.

Did you forget your password? Go to the [Password Reset page](#).

Does your callsign need to be validated? Go to the [Validation page](#).

If you still need help, and you have a question that isn't answered in the FAQs above, please fill out the form below and your question will be directed via e-mail to someone who can help. Be sure to include your own e-mail address if you expect a reply. Your patience is appreciated by those who devote their free time to supporting EchoLink.

Callsign:

E-Mail Address:

Operating System Version:

EchoLink Version:  (choose About from EchoLink's Help menu)

Category:

Question or Comment:

(English language only, please)

- EchoLink for Dummies
  - [ws6transam.org/Echolink\\_NE8K.pdf](http://ws6transam.org/Echolink_NE8K.pdf)
- VoIP Internet Linking for Radio Amateurs by Jonathan Taylor, K1RFD
  - ARRL Book
- Nifty E-Z Guide to EchoLink Operation
  - Nifty Guidebook

# Questions?

## To Learn More:

Check out the Nashua Area Radio Society's Tech Night Program at:

[n1fd.org/tech-night](http://n1fd.org/tech-night)

Become an Internet Subscriber (or members of NARS):

[n1fd.org/join-us](http://n1fd.org/join-us)

Much more information, pictures and video are available on our Blog at:

[stationproject.blog](http://stationproject.blog)

